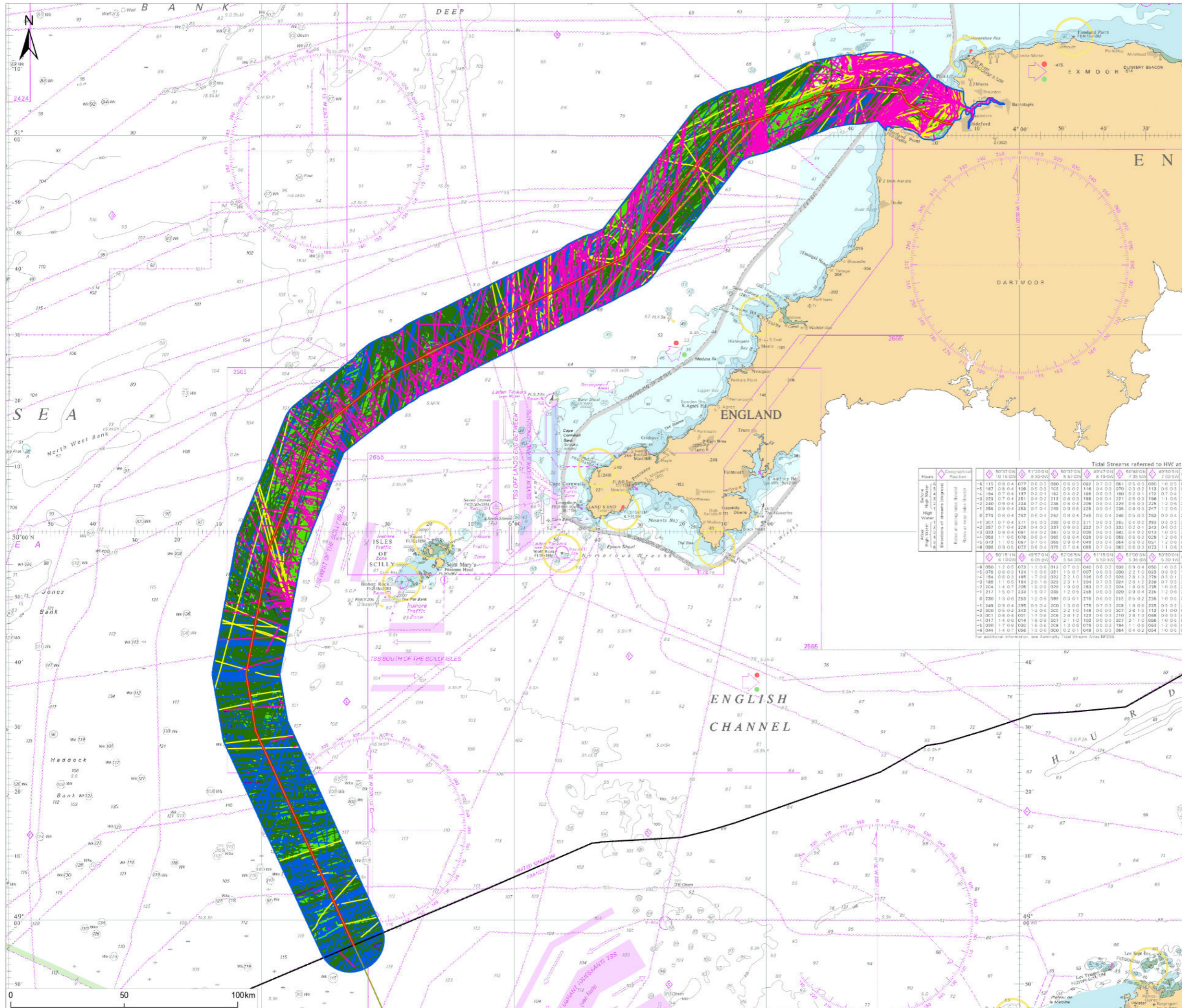


P:\Project\A5128_Xlinks_NRA\GIS\APR\Xlinks-4 AIS Vessel Tracks by Type (September 2022 - August 2023).aprx



Notes
 1. This plan is scaled at paper size A3. If received electronically it is the recipient's responsibility to print to the correct scale. Only written dimensions should be used.

- Legend**
- UK Offshore Cable Corridor
 - Shipping and Navigation Study Area (5 nautical miles)
 - Indicative Cable Centreline
 - UK Exclusive Economic Zone (EEZ)
- Vessel Type**
- Unspecified
 - Fishing
 - Military
 - Dredger/Underwater Ops
 - Tug
 - Passenger
 - Cargo
 - Tanker
 - Other
 - Recreational
 - Oil and Gas
 - Wind Farm

Tidal Streams referred to HW at 0

Hour	50°37'00" N 10°16'00" W	51°00'00" N 9°30'00" W	50°37'00" N 8°57'00" W	50°40'00" N 8°19'00" W	50°40'00" N 7°38'50" W	49°50'00" N 7°02'50" W
0	0.78	0.84	0.88	0.91	0.93	0.94
1	0.75	0.80	0.83	0.85	0.87	0.88
2	0.70	0.74	0.76	0.78	0.80	0.81
3	0.63	0.66	0.68	0.70	0.72	0.73
4	0.54	0.56	0.58	0.60	0.62	0.63
5	0.43	0.44	0.46	0.48	0.50	0.51
6	0.31	0.31	0.33	0.35	0.37	0.38
7	0.18	0.18	0.20	0.22	0.24	0.25
8	0.04	0.04	0.06	0.08	0.10	0.11
9	-0.11	-0.11	-0.13	-0.15	-0.17	-0.18
10	-0.25	-0.25	-0.27	-0.29	-0.31	-0.32
11	-0.37	-0.37	-0.39	-0.41	-0.43	-0.44
12	-0.47	-0.47	-0.49	-0.51	-0.53	-0.54
13	-0.55	-0.55	-0.57	-0.59	-0.61	-0.62
14	-0.61	-0.61	-0.63	-0.65	-0.67	-0.68
15	-0.65	-0.65	-0.67	-0.69	-0.71	-0.72
16	-0.67	-0.67	-0.69	-0.71	-0.73	-0.74
17	-0.67	-0.67	-0.69	-0.71	-0.73	-0.74
18	-0.65	-0.65	-0.67	-0.69	-0.71	-0.72
19	-0.61	-0.61	-0.63	-0.65	-0.67	-0.68
20	-0.55	-0.55	-0.57	-0.59	-0.61	-0.62
21	-0.47	-0.47	-0.49	-0.51	-0.53	-0.54
22	-0.37	-0.37	-0.39	-0.41	-0.43	-0.44
23	-0.25	-0.25	-0.27	-0.29	-0.31	-0.32
24	-0.11	-0.11	-0.13	-0.15	-0.17	-0.18
25	0.04	0.04	0.06	0.08	0.10	0.11
26	0.18	0.18	0.20	0.22	0.24	0.25
27	0.31	0.31	0.33	0.35	0.37	0.38
28	0.43	0.44	0.46	0.48	0.50	0.51
29	0.54	0.56	0.58	0.60	0.62	0.63
30	0.63	0.66	0.68	0.70	0.72	0.73
31	0.70	0.74	0.76	0.78	0.80	0.81
32	0.75	0.80	0.83	0.85	0.87	0.88
33	0.78	0.84	0.88	0.91	0.93	0.94
34	0.78	0.84	0.88	0.91	0.93	0.94
35	0.75	0.80	0.83	0.85	0.87	0.88
36	0.70	0.74	0.76	0.78	0.80	0.81
37	0.63	0.66	0.68	0.70	0.72	0.73
38	0.54	0.56	0.58	0.60	0.62	0.63
39	0.43	0.44	0.46	0.48	0.50	0.51
40	0.31	0.31	0.33	0.35	0.37	0.38
41	0.18	0.18	0.20	0.22	0.24	0.25
42	0.04	0.04	0.06	0.08	0.10	0.11
43	-0.11	-0.11	-0.13	-0.15	-0.17	-0.18
44	-0.25	-0.25	-0.27	-0.29	-0.31	-0.32
45	-0.37	-0.37	-0.39	-0.41	-0.43	-0.44
46	-0.47	-0.47	-0.49	-0.51	-0.53	-0.54
47	-0.55	-0.55	-0.57	-0.59	-0.61	-0.62
48	-0.61	-0.61	-0.63	-0.65	-0.67	-0.68
49	-0.65	-0.65	-0.67	-0.69	-0.71	-0.72
50	-0.67	-0.67	-0.69	-0.71	-0.73	-0.74
51	-0.67	-0.67	-0.69	-0.71	-0.73	-0.74
52	-0.65	-0.65	-0.67	-0.69	-0.71	-0.72
53	-0.61	-0.61	-0.63	-0.65	-0.67	-0.68
54	-0.55	-0.55	-0.57	-0.59	-0.61	-0.62
55	-0.47	-0.47	-0.49	-0.51	-0.53	-0.54
56	-0.37	-0.37	-0.39	-0.41	-0.43	-0.44
57	-0.25	-0.25	-0.27	-0.29	-0.31	-0.32
58	-0.11	-0.11	-0.13	-0.15	-0.17	-0.18
59	0.04	0.04	0.06	0.08	0.10	0.11
60	0.18	0.18	0.20	0.22	0.24	0.25
61	0.31	0.31	0.33	0.35	0.37	0.38
62	0.43	0.44	0.46	0.48	0.50	0.51
63	0.54	0.56	0.58	0.60	0.62	0.63
64	0.63	0.66	0.68	0.70	0.72	0.73
65	0.70	0.74	0.76	0.78	0.80	0.81
66	0.75	0.80	0.83	0.85	0.87	0.88
67	0.78	0.84	0.88	0.91	0.93	0.94
68	0.78	0.84	0.88	0.91	0.93	0.94
69	0.75	0.80	0.83	0.85	0.87	0.88
70	0.70	0.74	0.76	0.78	0.80	0.81
71	0.63	0.66	0.68	0.70	0.72	0.73
72	0.54	0.56	0.58	0.60	0.62	0.63
73	0.43	0.44	0.46	0.48	0.50	0.51
74	0.31	0.31	0.33	0.35	0.37	0.38
75	0.18	0.18	0.20	0.22	0.24	0.25
76	0.04	0.04	0.06	0.08	0.10	0.11
77	-0.11	-0.11	-0.13	-0.15	-0.17	-0.18
78	-0.25	-0.25	-0.27	-0.29	-0.31	-0.32
79	-0.37	-0.37	-0.39	-0.41	-0.43	-0.44
80	-0.47	-0.47	-0.49	-0.51	-0.53	-0.54
81	-0.55	-0.55	-0.57	-0.59	-0.61	-0.62
82	-0.61	-0.61	-0.63	-0.65	-0.67	-0.68
83	-0.65	-0.65	-0.67	-0.69	-0.71	-0.72
84	-0.67	-0.67	-0.69	-0.71	-0.73	-0.74
85	-0.67	-0.67	-0.69	-0.71	-0.73	-0.74
86	-0.65	-0.65	-0.67	-0.69	-0.71	-0.72
87	-0.61	-0.61	-0.63	-0.65	-0.67	-0.68
88	-0.55	-0.55	-0.57	-0.59	-0.61	-0.62
89	-0.47	-0.47	-0.49	-0.51	-0.53	-0.54
90	-0.37	-0.37	-0.39	-0.41	-0.43	-0.44
91	-0.25	-0.25	-0.27	-0.29	-0.31	-0.32
92	-0.11	-0.11	-0.13	-0.15	-0.17	-0.18
93	0.04	0.04	0.06	0.08	0.10	0.11
94	0.18	0.18	0.20	0.22	0.24	0.25
95	0.31	0.31	0.33	0.35	0.37	0.38
96	0.43	0.44	0.46	0.48	0.50	0.51
97	0.54	0.56	0.58	0.60	0.62	0.63
98	0.63	0.66	0.68	0.70	0.72	0.73
99	0.70	0.74	0.76	0.78	0.80	0.81
100	0.75	0.80	0.83	0.85	0.87	0.88



Rev	Description	By	CB	Date
P01	FINAL	DS	LD	Nov 2024



Client Xlinks 1 Limited
Project Xlinks' Morocco-UK Power Project
Title AIS Vessel Tracks by Type (September 2022 to August 2023)

APFP Reg: 5(2)(a)
Status FINAL **Scale @ A3** 1:1,600,000 **Date Created** Nov 2024
Figure Number 5.4 **Rev** P01

www.xlinks.co